

# Apache

1985  
SOLID STATE  
Folding Travel Trailers

There is NO  
Comparison.

FROM THIS ...



... TO THIS IN MINUTES



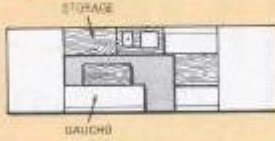
[www.apacheowners.com](http://www.apacheowners.com)



## Ramada

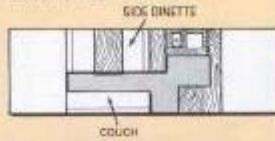
The Ramada's popularity is attributable to its capacity to sleep 6 people and its 14.5 sq. ft. of usable counter-top surface, and caddies of storage space below. The gaucho is a couch, a dining area and opens into a 3' x 6' bed. Its roominess and open feeling are enhanced by the 62 sq. ft. of windows.

You won't ever feel closed-in in a Ramada.



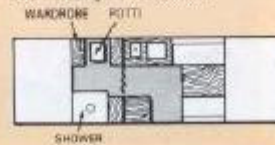
## Ranger

Wow, what a kitchen! It's functional and provides plenty of counter space (22 sq. ft.). The side dinette offers a different perspective of the outdoors through Apache's extra large windows. This floor plan also provides easy access to both beds. The adjoining couch and dinette make for an ideal conversation area, and the dinette quickly converts into a whopping 6' W x 6' 5' L bed.



## Royal

It would take a separate brochure to adequately cover all of the Royal's features. Start with a large shower, 6 gallon hot water heater, demand water pump, deluxe 30 amp converter, range hood, a wardrobe and much more. Plus a solid wall between dressing room and living area to give you two separate rooms for privacy when you want it. Everything is here including the kitchen sink.



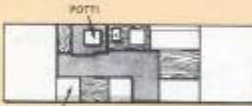
[www.apacheowners.com](http://www.apacheowners.com)

## Cimarron I



Both Cimarron models feature a unique side bathroom fully enclosed with solid walls. It provides you with the necessities and privacy you wouldn't expect to see in a folding trailer. A portable toilet is standard or you can add the optional flush toilet with built-in 9-gallon holding tank. Fresh water is supplied through the demand water pump.

Choose the Cimarron I with the two-seat lounge and storage/counter between for more seating capacity, or pick the Cimarron II, if it's more storage and a wardrobe that you want.



## Cimarron II



### Why You Should Invest in Apache Rather than a Conventional Travel Trailer . . .

- \*Towing Ease.** The lighter weight and lower profile of Apache trailers make them more easily, and economically, towed by a greater range of motor vehicles.
- \*Living Area.** Apache gives you the living area of a 24' travel trailer. And the permanent bed areas eliminate the need to daily make dinettes into beds and back again.
- \*Value.** The innovative engineering that goes into every Apache to give you more quality features costs more, and is worth more, just as the cost of a convertible auto is higher than that of a standard sedan.



### . . . or a Regular Folding Trailer with Tenting.

- \*Security and Comfort.** The Solid State construction provides a sturdy, secure and comfortable home to make your camping experiences memorable ones.
- \*Features and Construction.** Apaches are loaded with special features like premium grade exterior plywood floors topped with attractive high-grade vinyl. Solid oak frames the cabinet doors, and all tables, counter tops and cabinets are made of quality plywood. You won't find any flakeboard in an Apache.
- \*Value.** As the saying goes, you get what you pay for. These outstanding features, plus Solid State construction, mean you get more out of your Apache while you own it and more in dollars, if you sell it.



[www.apacheowners.com](http://www.apacheowners.com)

## SPECIFICATIONS

	Ranado		Ranger		Cinnamon		Royal	
	1	II	1	II	1	II	1	II
<b>DIMENSIONS</b>								
Length Over	21' 9"	21' 9"	21' 6"	21' 9"	21' 9"	21' 9"	21' 9"	21' 9"
Length Under	18' 4"	18' 4"	18' 4"	18' 4"	18' 4"	18' 4"	18' 4"	18' 4"
Width	78"	78"	78"	78"	78"	78"	78"	78"
Travel Height	53' 5"	53' 5"	53' 5"	53' 5"	53' 5"	53' 5"	53' 5"	53' 5"
Clearing Height	78"	78"	78"	78"	78"	78"	78"	78"
Hook Weight*	177	180	180	176	184	184	184	184
Asks Weight*	1680	1680	1555	1635	1724	1724	1724	1724
Gross Vehicle Weight	3480	3480	3480	3480	3480	3480	3480	3480
Tree 25.5" x 4" H†	4	4	4	4	4	4	4	4
2" Coupler	3	3	3	3	3	3	3	3
Square Feet of Floor	74	74	74	74	74	74	74	74
<b>INTERIOR FEATURES</b>								
64 White Beds	5	5	5	5	5	5	5	5
Decorated Cabinet	14.5	14.5	14.5	14.5	14.5	14.5	14.5	14.5
Designer Fabrication	5	5	5	5	5	5	5	5
Passage Toilet Storage	5	5	5	5	5	5	5	5
Passage Toilet	11	11	11	11	11	11	11	11
Large 20" Square Shower	14.5	14.5	14.5	14.5	14.5	14.5	14.5	14.5
Front Entrance	5	5	5	5	5	5	5	5
Side Entrance	—	—	—	—	—	—	—	—
Separate Bedroom Area	—	—	5	5	5	5	5	5
Counter Space 54" H†	14.5	14.5	12	12	11	11	11	11
Kitchen Counter Height	36	36	36	36	36	36	36	36
Number of Drawers	3	3	1	1	1	1	1	1
Wardrobe	—	—	—	—	—	—	—	—
Hot Water Shower	5	5	5	5	5	5	5	5
Ice Box	5	5	5	5	5	5	5	5
<b>EXTERIOR FEATURES</b>								
ABS Solid State Construction	5	5	5	5	5	5	5	5
W800V Exit Hatch Door	5	5	5	5	5	5	5	5
1/2" T&G Plywood Floor	5	5	5	5	5	5	5	5
Aluminum Gas Lift System	5	5	5	5	5	5	5	5
4 Adjustable Landing Legs	5	5	5	5	5	5	5	5
Deluxe Wheel Steer	5	5	5	5	5	5	5	5
Stabby Chairs	5	5	5	5	5	5	5	5
Large Frontal Working Windows	5	5	5	5	5	5	5	5
Square Foot Working Windows	62	62	62	62	62	62	62	62
Window Screens	5	5	5	5	5	5	5	5
Sealed One Piece Roof	5	5	5	5	5	5	5	5
<b>OPTIONAL EQUIPMENT</b>								
Mounted Door Step	5	5	5	5	5	5	5	5
Clean Wheel Wells	5	5	5	5	5	5	5	5
Stair Tread Mounting Brackets	5	5	5	5	5	5	5	5
Bumper	5	5	5	5	5	5	5	5
Wind Fan	5	5	5	5	5	5	5	5
Aerating Pad	5	5	5	5	5	5	5	5
Electric Brakes	5	5	5	5	5	5	5	5
Insulated Panel 4 Corner Doors	5	5	5	5	5	5	5	5
Built In ABS Bumper(s)	5	5	5	5	5	5	5	5
<b>ELECTRICAL</b>								
15 Amp Converter	5	5	—	—	—	—	—	—
20 Amp Converter	—	—	5	5	—	—	—	—
20 Foot Power Cord	5	5	5	5	5	5	5	5
Night Light	1	1	1	1	1	1	1	1
12 Volt Dometic Lights	5	5	5	5	5	5	5	5
10 Volt Bulbs	5	5	5	5	5	5	5	5
Range Hood with Light	—	—	—	—	—	—	—	—
<b>GAS</b>								
3 Burner Range and Cover	5	5	5	5	5	5	5	5
25 Lb. LP Gas Bottle	5	5	5	5	5	5	5	5
<b>WATER</b>								
12 Gallon Fresh Water Tank	5	5	5	5	5	5	5	5
22 Gallon Fresh Water Tank	—	—	—	—	—	—	—	—
Hot Water Heater	—	—	—	—	—	—	—	—
City Water Hookup	5	5	5	5	5	5	5	5
Second Water Pump	—	—	5	5	5	5	5	5
<b>OPTIONS</b>								
Refrigerator Upgrade	0	0	0	0	0	0	0	0
1900 BTU Furnace	0	0	0	0	0	0	0	0
Passage Toilet	0	0	0	0	0	0	0	0
Air Conditioner	0	0	0	0	0	0	0	0
Stair Treads	0	0	0	0	0	0	0	0
Privacy Curtains	0	0	0	0	0	0	0	0
Canopy	0	0	0	0	0	0	0	0
Bumper Hook	0	0	0	0	0	0	0	0
† Standard Equipment when all systems are								

### One of Apache's Outstanding Features is Not a Tent

It's generally thought that a folding trailer utilizes tenting to surround the bed and upper walls. The Apache Solid State construction eliminates the inherent problems with tenting. Apache's tough Royal Thermoplastic is not subject to shrinking, seams tearing, mildew or broken zippers. Rugged Royal gives you a stable, dry, comfortable and secure place for you and your family and only Apache gives you this solid security in the bed ends where you sleep.

Apache's attention to solid construction doesn't stop there. The supporting structure of the body and roof is aluminum, not wood or styrofoam touted as laminated construction. It's easy to get in and out of an Apache which has the widest door in the industry. Notice the high, easy to work at counter tops. The list goes on and on. Look Apache over carefully, try to compare. You'll find there is no comparison. Honest Injun.



**APACHE**  
Apache Sales Corp.  
Dryden, Michigan 48428

APACHE Sales Corp. reserves the right to make changes at any time, without notice, in price, color, material, specifications, standard equipment and models, and to discontinue models or make changes without obligation, regarding previous models. Some items shown in product literature are being discontinued.

